

*Chattanooga, Tennessee,
Post Office and Court House (left)*

Architect: R. H. Hunt.
Mural in Court Room by Hilton Leech.

Subject Matter: A. *Allegory of Chattanooga*.

Key to Drawings:

1. Elevation of end wall of Court Room, showing position of mural above Judge's seat. Dimensions of mural 17'3" wide x 5' high.

2. Plan of Court Room.

CHATTANOOGA,
TENNESSEE,
POST OFFICE AND
COURT HOUSE

Chicago, Illinois, Post Office (below)

Architects: Graham, Anderson, Probst & White.
Murals in Main Office of General in Charge of the Army Sixth Corps Area, on the fourth floor, and in the corridor outside, by Charles Turzak, assisted by Desiderio Lavini.

Subject Matter: Office—A, B, C, D. *Decorative Maps of the Sixth Corps Area*.

Corridor—A, B, C, D. *Abstract Treatment of Symbols and Instruments Relating to the Army*.

Key to Drawings:

3. Elevation of side walls of office, showing positions of murals, broken by doors and windows. Dimensions of murals 51' running feet.

4. Painted surface 9' high above baseboard.

7. Plan of Office.

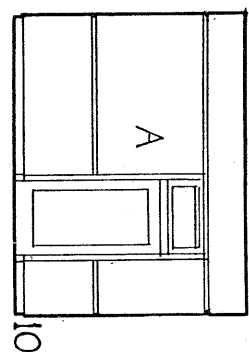
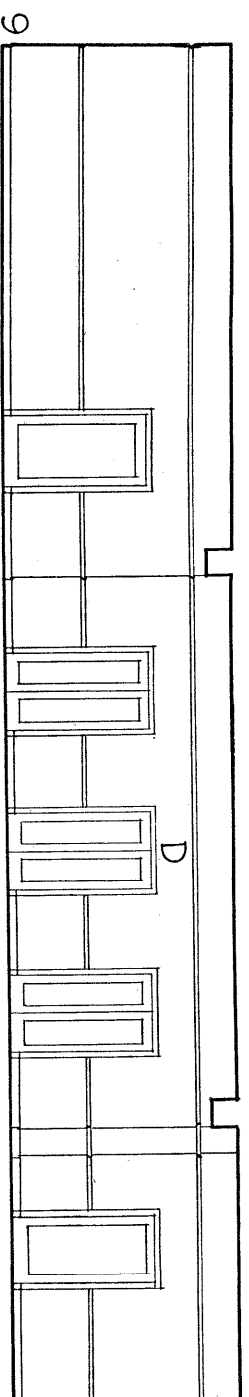
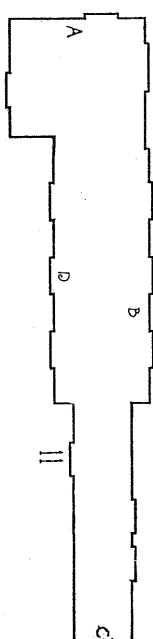
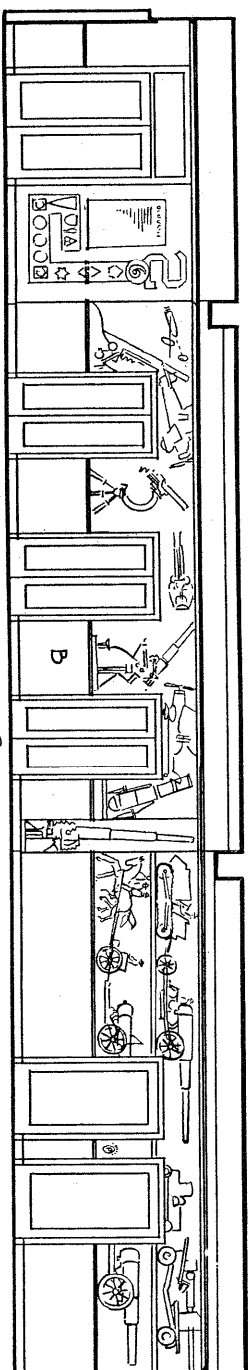
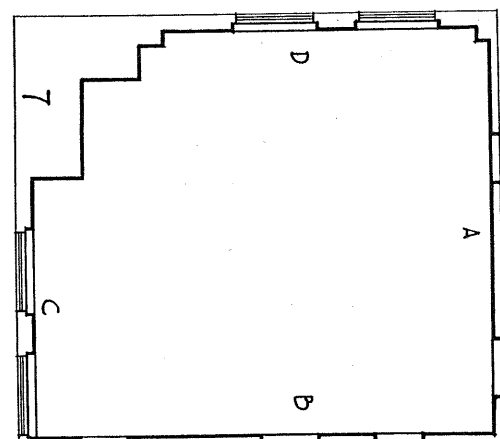
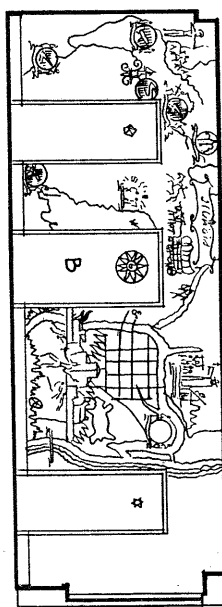
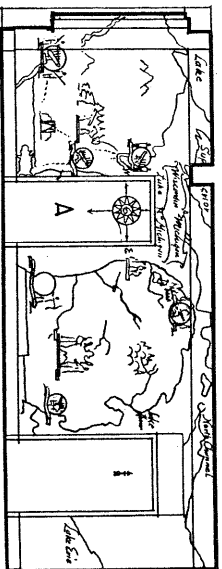
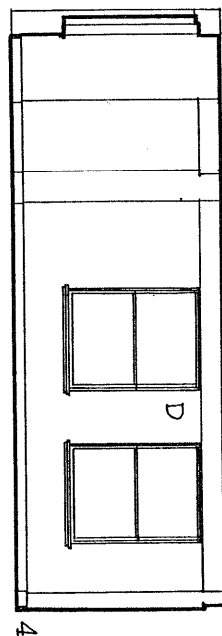
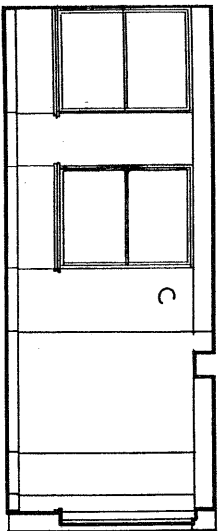
CORRIDOR

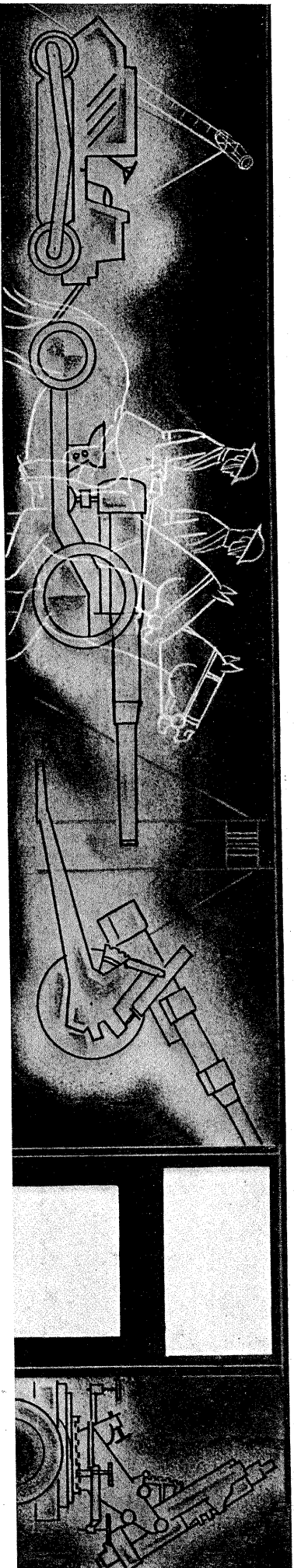
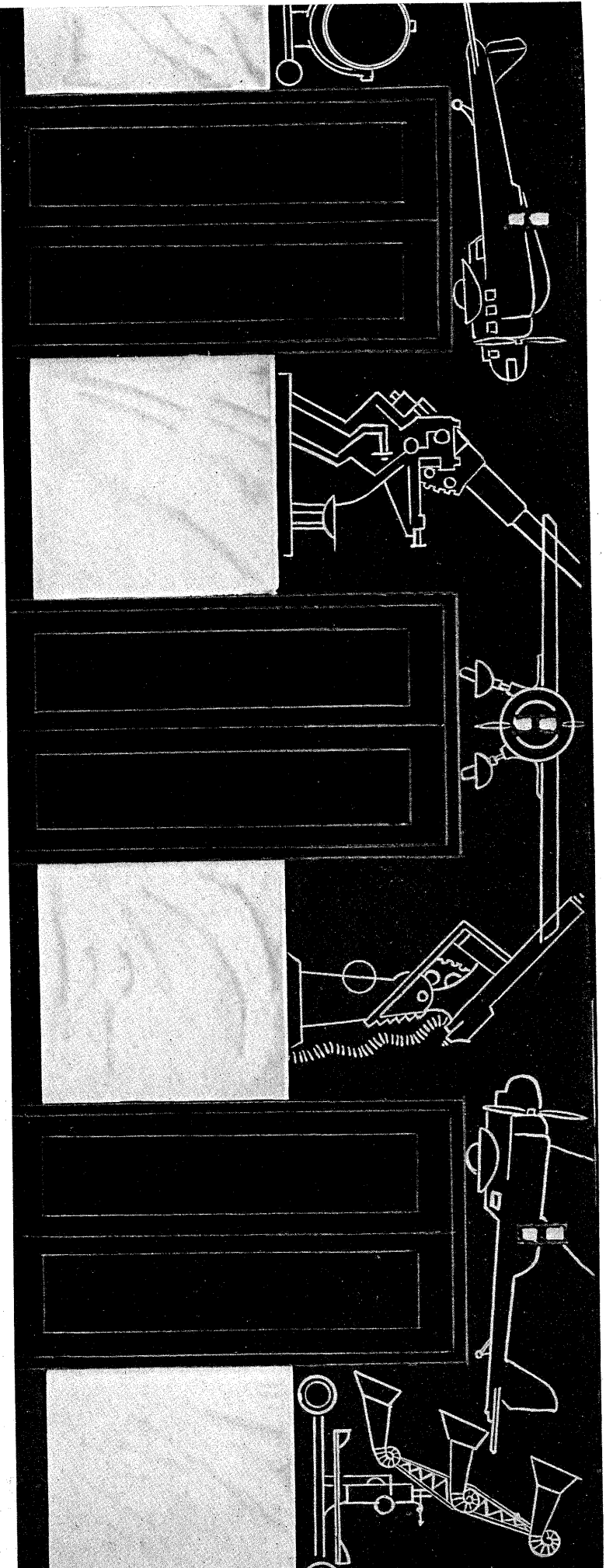
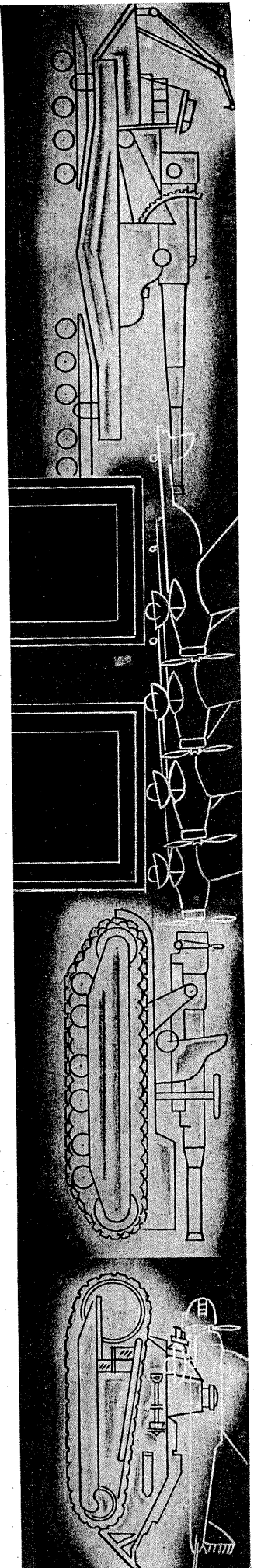
8 and 9. Elevations of two side walls of corridor, showing positions of murals broken by doors.

10. Elevation of end wall, showing position of mural. Dimensions of corridor 64' long x 7', 10' and 14' wide. Painted surface 5'6" above wainscot.

11. Plan of Corridor.

CHICAGO, ILLINOIS,
POST OFFICE

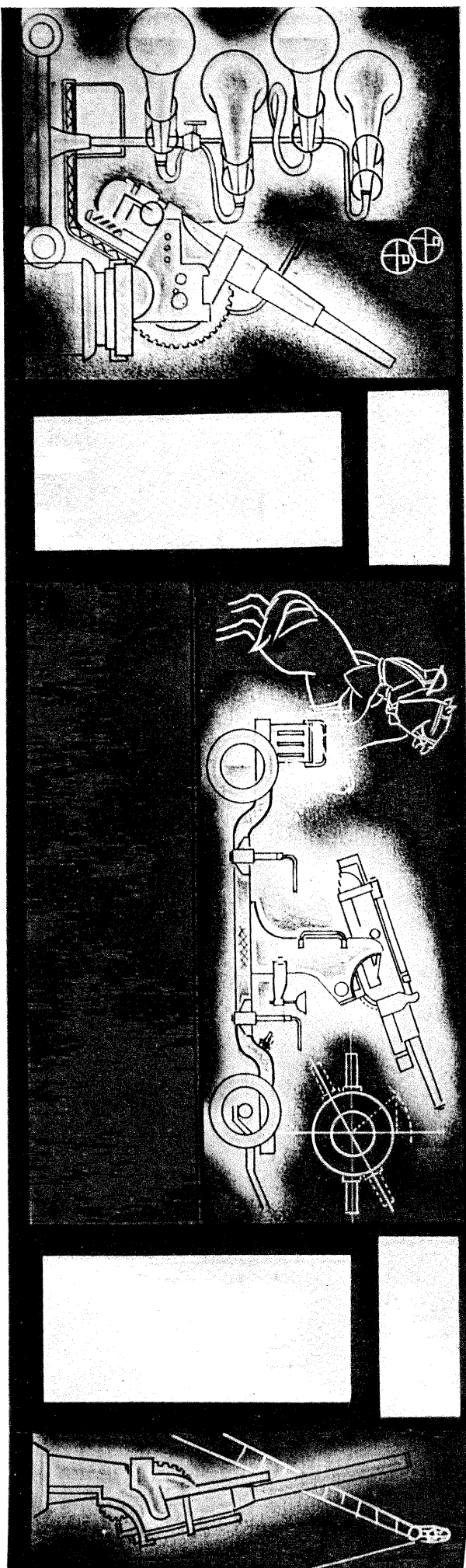




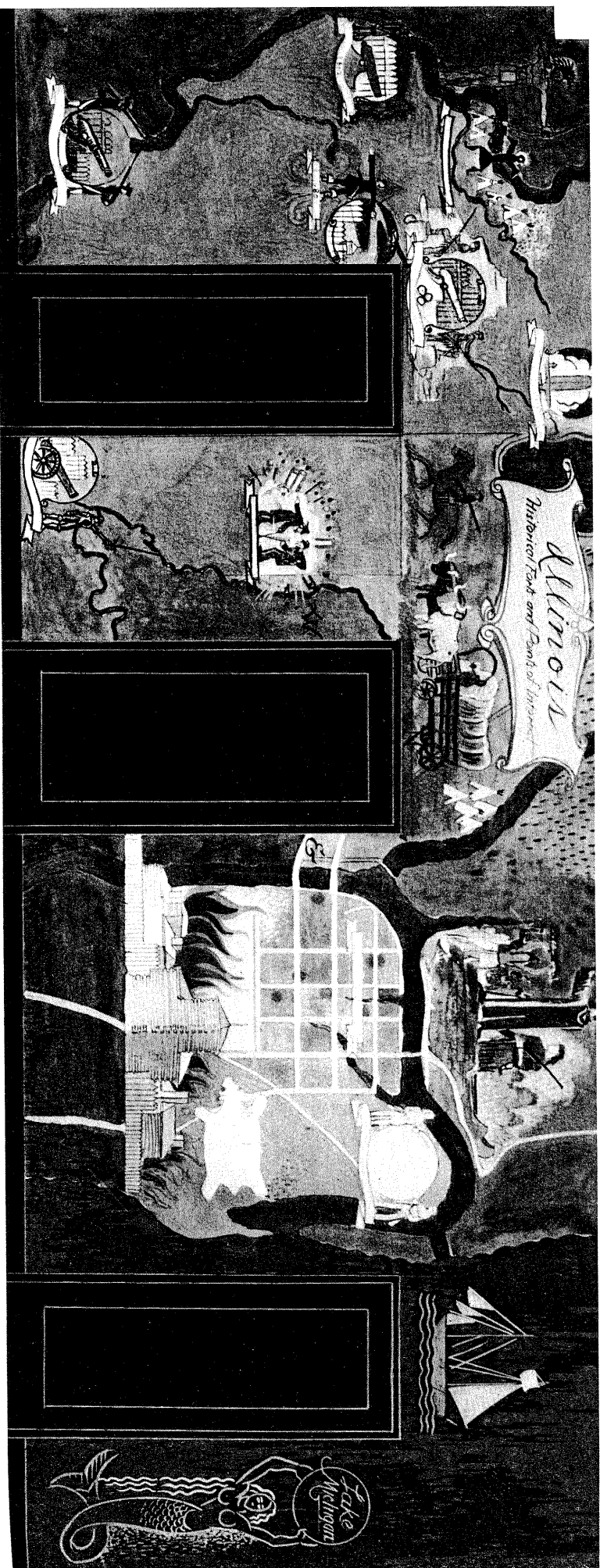
Symbols and Instruments Relating to the Army

Studies for Mural Designs in the Corridor Outside the Office of the General in Charge, Army Sixth Corps Area, Chicago, Illinois, Post Office
Corridor 10' wide x 64' long Painted Surface 5'6" above wainscot

CHARLES TURZAK



Further Studies for Murals Outside the General's Office, Chicago, Illinois, Post Office



Study for One of Four Walls Showing Decorative Maps of the Region in the Office of the General in Charge of the Sixth Corps

Room 24' wide x 27' long

Painted Surface 9' above baseboard